



# LEAGUE LETTER

A PUBLICATION OF THE JUNIOR LEAGUE OF SAINT LOUIS





# The Boutique

*is open for business!*



Tuesday – Friday from 10:00AM – 2:00PM  
Saturday from 10:00AM – 4:00PM

Please sign up to volunteer at the Boutique on Digital Cheetah!

*Come join us!*

## IN THIS ISSUE

- |    |   |    |   |
|----|---|----|---|
| 4  | JLSL Leadership:<br>Outgoing President's Message  | 19 | Meet Our Members:<br>Sue Felling                                    |
| 6  | JLSL Leadership:<br>Crystal Allen Dallas  | 20 | Meet Our Members:<br>Shannon Stromath                               |
| 8  | 2021 - 2022 League<br>Accomplishments   | 21 | Meet Our Members:<br>Erin Welsh                                     |
| 9  | Thank You to our 2021 - 2022<br>Board of Governance Team  | 22 | In Memoriam   |
| 9  | Thank You to our 2021 - 2022<br>Management Committee  | 23 | Who's our Drue?<br>Drue Lane Webster Volunteer<br>Service Award     |
| 10 | Kicking off a collaboration<br>with RUNG for Women  | 26 | Annual Awards Meeting   |
| 11 | Community Impact:<br>Partners, Projects<br>and Progress   | 28 | 20 Years of Community<br>Partnership with Nottingham<br>CAJT School |
| 12 | Update on the Impact Area<br>Implementation / CIP Process   | 30 | Top Golf & Other<br>Fundraising Efforts                             |
| 14 | Welcoming Our<br>2022 - 2023 Leaders  | 31 | Earn Your Apron:<br>Help Out the JLSL Boutique                      |
| 15 | Community Not Conformity:<br>JLSL's Inaugural Diversity,<br>Equity, Inclusion and<br>Belonging Summit | 32 | JLSL New Member Class   |
|    |   | 34 | JLSL in the Community   |
|    |   | 36 | Upcoming Events   |
| 18 | Meet Our Members:<br>Lucy Steis   | 36 | Social Media  |





## OUTGOING PRESIDENT'S MESSAGE

KATIE DUFFIN

President, 2020-2022

Greetings Junior League of St. Louis!

As we end this league year, and head into a new one – it is a time of transition and reflection for all of us. We are so thankful for the support of our Members, Community Partners & Friends of the Junior League of St. Louis. Like most organizations, the last two years has been an immensely challenging time for our organization – and I remain inspired by our steadfast commitment to serve our Vision, Mission, and Values.

After almost 4 years of service in first the President-Elect and now President roles, I am proud of what we have accomplished together. We have collaborated to deepen our community

partnerships, firmly established our ongoing commitment to our membership to be a place of belonging for all women who value our mission, and strategically positioned our organization for another 107 years of impact in the St. Louis Region.

There is truly so much to be proud of. In the last few months alone, we have established a new evergreen strategic plan, have updated our bylaws for the first time since 2015 & held the first ever JLSL Diversity, Equity, Inclusion & Belonging Summit. Through our bylaws update, we are part of 15% of our organization internationally who recognizes the right of all active and sustaining members to vote – thus deepening our commitment to inclusivity for all.

Just earlier this month, I had the incredible opportunity to attend the AJLI Annual Conference as our voting delegate – and witnessed history in action, by the passing of our new mission statement.

**The Association of Junior Leagues International, Inc. is an organization of women whose Mission is to advance women's leadership for meaningful community impact through volunteer action, collaboration, and training."**

**—With the proviso that all Junior Leagues shall adopt the new Mission Statement by July 1, 2024**

*This mission statement was last updated over forty years ago and was the culmination of four years of dedicated efforts by the AJLI Board. I was hugely impressed by the transparency of the process, and the many opportunities for feedback from all of membership. This new mission statement updates the language, succinctly clarifies our purpose, and positions us well for the next +100 years. Our own 2022-2023 Board of Governance will lead us through the adoption process at a local level.*



As I close my term as President, I am most excited about our work with the Collective Impact Process (CIP) and the recent selection of Advancing Childhood Education as our Community Impact Focus. We invite all of membership to continue to participate in this process – as we build out our strategy for measurable impact in this area. I am also pleased with our ongoing efforts to bring our Membership together, regardless of Membership classification – as one collective and united League. We are always Stronger Together, and there is immense power and impact in our collective voice as a Membership.

I am enthusiastic about the path that lies ahead – and the vision of our new Leadership Team led by Lisa Barry-Jenkins & Crystal Allen Dallas. We are fortunate to have such incredible leaders at the helm, and I am humbled and thankful to have served with each of them.

Lastly, I would like to thank all our Members, Board of Governance, Management Group, Janet Mika, Donna Meyer & Susan Metzger for their support and dedication these last four years. I also owe a deep debt of gratitude to my family – especially my wife Sharon and daughter Mackenzie, for the many times that the needs of the JLSL took priority. To serve in these roles has been an honor, as well as an amazing leadership and learning opportunity – for which I am deeply thankful. And I look forward to our collective future together – with the Junior League of St. Louis continuing to be a place of belonging for all women who value our mission.

Yours in Service,

*Katie Duffin*

President, 2020-2022





## LETTER FROM LEADERSHIP

CRYSTAL ALLEN DALLAS

President Elect, 2022-2024

Greetings and Happy Summer my fellow Junior League members!

It is hard to believe that we are at the end of another League year. I want to thank you for your continued commitment to the Junior League of St. Louis. It is because of you that we can live our mission out every day. I am honored to have the opportunity to serve as your President-Elect. First, a little about me and my league career, I have been a member of Junior League for more than decade now. The Junior League of St. Louis is my third League. I have had the opportunity to serve on the Association of Junior Leagues International (AJLI) Governance Committee, AJLI Dues Taskforce, in-league placements such the Board of Governance and Management Team roles as well as Community Impact Strong Women and Families. Serving in these various roles have added

so much to me as a woman, business owner, wife, mother, and community volunteer.

One of the many reasons #WhyJLSL is having the opportunity to connect and serve with amazing women in our region and beyond. I know first-hand that when women support each other, we can accomplish anything! The work of Junior League is truly inspiring. Women working to improve our communities and provide leadership development opportunities is at the core of everything we do. As we prepare for the upcoming League year, I ask that you join us and commit to getting "Back to Basics". We know that the last few years have been a challenging time for us all. Now more than ever we must embrace our core values to ensure we are living out our mission in every area of our organization. For more than 107 years, our organization has

committed to being the change we want to see in our region. This fall, we will be offering our signature trainings, leadership development track, and community impact opportunities to our members. I am personally asking you to commit to take advantage of these opportunities because it is an honor to serve.

We are already being contacted by community partners and the community-at-large that want to engage with the Junior League of St. Louis. One of my main goals for this year will be ensuring members have a clear system in place for getting information and finding information that matters to you. The Management Team will be working to provide communication to members at the team level. We believe this is essential the overall Junior League experience.

Other goals for this year include:

1. Establish a post-pandemic League work cadence. *Offering regular training, leadership development opportunities and other member connection activities.*

2. Amplify the Junior League of St. Louis brand in the region. *We all have a part to play in this. I am asking you to share your JLSL work and experiences with your network of influence. Lisa and I will be actively connecting with our community partners and other community leaders to ensure they are aware of our organization's work.*
3. Bring back the League Leadership Lunch/ Social Hour events. These events will likely alternate to give all our members opportunities to attend. These sessions will be an opportunity to connect with leadership and/or hear from other leaders in our community on topics that matter to us.

There is much work to be done, but we need everyone to reach our goal of creating positive lasting change in our community. We need YOU to be present, accountable, and engage with us. The leadership team is extremely excited about the future of our League and the new impact area and the opportunity to again connect in person.

In closing, if you have ideas and want to help us to execute the key goals I have outlines, I invited you to reach out to me directly. I look forward to seeing each of you soon at an upcoming JLSL event.

Yours in service,

*Crystal Allen Dallas*

President-Elect, 2022-2024





# 2021 – 2022 LEAGUE ACCOMPLISHMENTS

- Selected our new issue area: **Advancing Childhood Education**
- Updated the Bylaws for the first time since 2015 – including Sustainers right to vote
- Deepened our partnership with the Nottingham CAJT School
- Hosted the first Diversity, Equity, Inclusion & Belonging Summit
- Established a new partnerships with RUNG for Women
- Hosted Strong Women & Families Mini Events
- Established a new, evergreen strategic plan
- Welcomed +30 New Members to the organization
- Volunteered +2000 hours
- Raised \$210k to support our Mission & Organizational Work
- Sold approximately 2,800 dozen cinnamon rolls
- Completed a 3 year effort to bring voice and choice to our members through the placement matching process (MTR 5.0)
- Conducted virtual training and events throughout the year
- Slated a new leadership team & completed placement – earlier than ever before
- Established a dedicated Diversity, Equity, Inclusion & Belonging Fund
- Association Level: Chose a new Mission Statement

**Infrastructure & Building Improvements:**

- Laptops for our staff
- Sustainable storage (cloud servers)
- Completed RFP & now using a more sustainable IT support solution
- Awning re-hung
- Building exterior repair



# THANK YOU TO OUR 2021 – 2022 BOARD OF GOVERNANCE TEAM

LISA BARRY JENKINS  
EMILY KALLA  
ALLY MELVIN  
CRYSTAL ALLEN DALLAS  
RAINA MCNUTT  
KIMBERLY RAYFORD  
MERRILEE MCFARLAND  
KATHERINE “BOO” ALTVATER  
KAREN DAVIS  
SUNNY BELLOWS  
KATIE DUFFIN

# THANK YOU TO OUR 2021 – 2022 MANAGEMENT COMMITTEE

LISA BARRY JENKINS  
DEBBIE CASON  
MAGGIE DONNELLY  
ROMNEY EDWARDS  
HILLARY HUNT FIALA  
KATHY ISAAK  
LIZ MARITZ  
DANIELLE RANDALL  
ANN QUAY RUSHING  
KATIE SIMEK



## KICKING OFF A COLLABORATION WITH RUNG FOR WOMEN

One year ago, Rung for Women opened its campus doors in Fox Park. Founded by Ali Kindle Hogan, Rung's Mission is simple. Empower women to grow and achieve sustained independence through co-located, coordinated educational, professional, and economic resources. Sound familiar?

Given the close alignment of our missions, JLSL and Rung connected, through a member affiliation, to discuss how we could work together. After much consideration, the organizations decided to pursue JLSL-managed volunteer shifts available to our membership. In December, 15 JLSL members stepped up to the plate, volunteering to complete Rung's Volunteer Management Process. This team of members participated in 1:1 interviews, completing

volunteer orientation, learning about Rung's values and exploring the many programs Rung offers their cohort members.

Please watch the member calendar in Digital Cheetah to sign-up for individual, one-time shifts at Rung. Volunteer opportunities will include shifts to work in the Rung kitchen, plant and maintain Rung's community garden, assist in their childcare center, and work within Rung's professional development program (resume reviewer, mock interviewer, train or present on topics of expertise etc). The opportunities are endless.

We are excited to collaborate with this incredible organization and look forward to what the future has in store.



### OUR VISION

In our lifetimes, all women will receive holistic supports, encouragements, and opportunities that position them to pursue their dreams and to thrive – as family members, role models, equal wage earners, entrepreneurs, and leaders in their communities.



## COMMUNITY IMPACT PARTNERS, PROJECTS AND PROGRESS

Community Impact would like to share what we've done this year! At the beginning of the year, membership asked for more volunteer shifts – and we're proud to say our team delivered. Since August 2021, the Community Impact team completed volunteer shifts and organized drives for the March of Dimes, Nottingham School, Dress for Success, Affinia, and Saint Vincent de Paul. We brought back a scaled version of Strong Women and Families partnering with Affinia. And we exceeded our goal of offering 1-2 volunteer shifts each month with just shy of 30 in-person volunteer opportunities this year. We owe a huge debt of gratitude to the Community Impact Leadership team for making this happen during a year which still posed many challenges and limitations.

We also simplified the Community Impact team structure to allow for more fluidity across committees and events and we're currently working on making a dynamic new calendar for next year that minimizes administrative meetings as projects get underway the second half of the league year. We're adjusting and evolving with our membership.





# UPDATE ON THE IMPACT AREA IMPLEMENTATION / CIP PROCESS

To restate a bit of background information. In June of 2021, the Association of Junior Leagues International (AJLI) selected the Junior League of St. Louis, along with nine other Junior League chapters, to join the Collective Impact Process Beta Cohort. The Collective Impact Process (CIP) brings together demographically and culturally comparable Junior League chapters to harness the power of cross-league communication and collaboration. The ultimate goal of this process is to affect measurable and meaningful change, collectively defining issue areas that we can tackle, not alone, but with a network of Junior Leagues on a national scale. Specifically, we have vast communication portals and access to AJLI leadership and other leagues at a level we've never had before.

This four-phased approach guides us through everything from internal auditing and partner evaluation to the identification of a more focused issue area where the JLSL will channel our efforts for the foreseeable future. While we have identified our Impact Area, Advancing Child Education, we have yet to narrow that down to a specific issue.

Since January, The Collective Impact task force and the Community Impact Research and Planning team (a new committee launched this calendar year), has worked to narrow several potential issue areas to the top 5.

The 5 Issue Areas we're currently evaluating:

1. After School Programs
2. Childhood Hunger
3. Childhood Mental Health
4. Early Childhood Education (this is typically defined as programs for 5 years and under)
5. Literacy

These issue areas were identified through an exhaustive data gathering exercise. First the Community Programs Board reviewed the 2019

United Way Community Needs Assessment. In 2021-2022, the Collective Impact Task Force and the Community Impact Research and Planning team weighed the Community Needs Assessment against member-provided connections, recommendations and interests. By March 2022, the FIVE issue areas identified above rose to surface as the most relevant areas of need and most appropriate issue areas under the JLSL's selected Impact focus of Advancing Childhood Education.

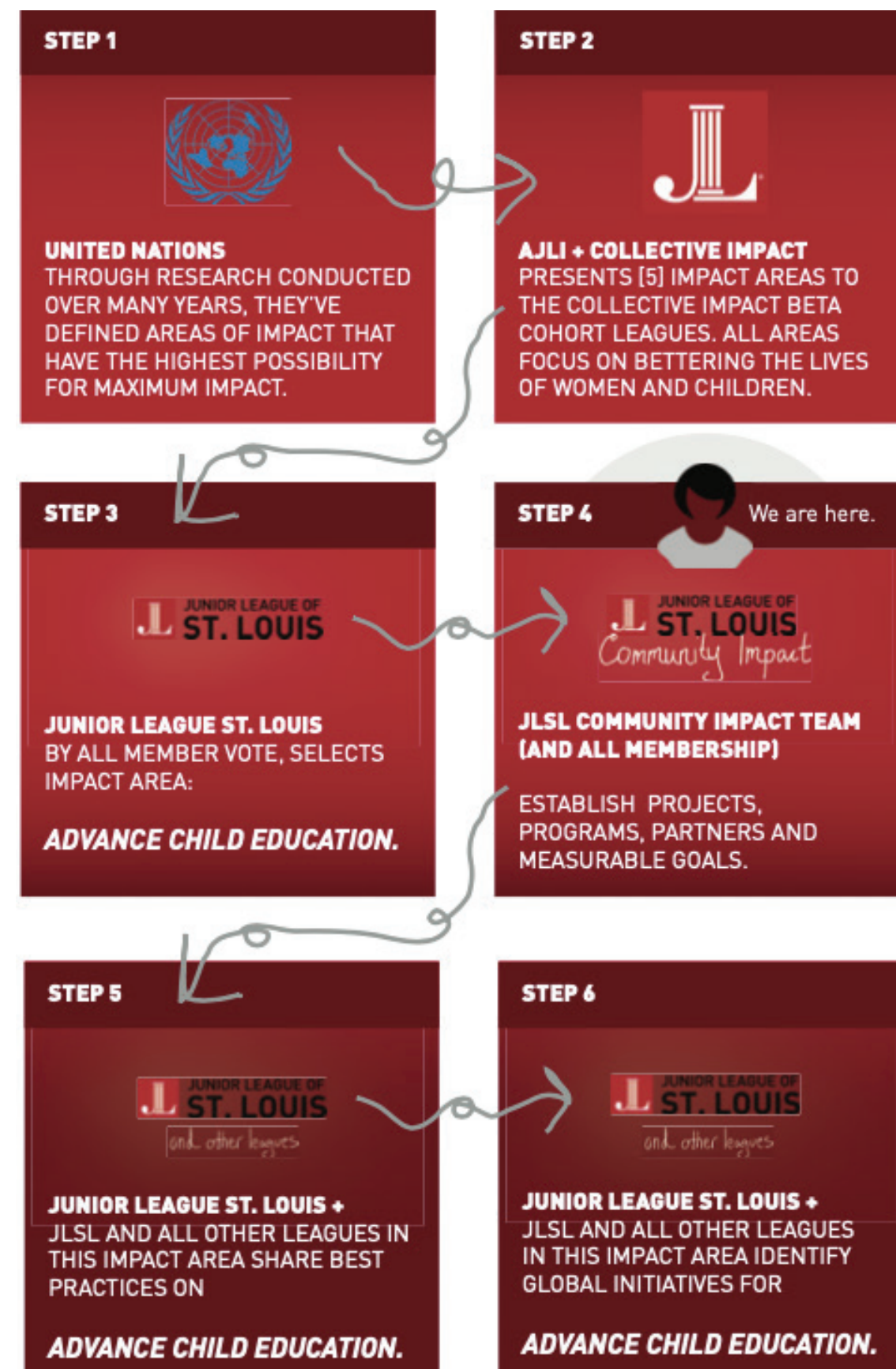
Currently, the Collective Impact Task Force continues to evaluate potential partners to help us engage in the area of Advancing Childhood Education. The task force is comprised of a group of JLSL members who are working closely with AJLI and nine other leagues across the country.

The next step in the Collective Impact Process is researching how we will impact this area with a selected partner. This will include important work like clearly defining our projects, programs, partners and success metrics. Early next league year, membership will have the opportunity to vote for an Issue Area.

Most importantly, we have heard our membership concerns as it relates to prior efforts. We are moving forward with refreshed focus and are mindful of how our efforts can be most impactful to the St. Louis region. We will be intentional when providing all JLSL membership the chance to be involved in the next steps - from opportunities for membership education to membership inclusion as we select our projects, programs, and partners.

For updates regarding the Collective Impact Process, the implementation of this new Impact Area, AND the finalization of volunteer partners, please watch for communications from our new issue area.

Send questions to [CIP@jls.org](mailto:CIP@jls.org)





# WELCOMING OUR 2022-2023 LEADERS

Our League programs would not be possible without so many members who volunteer their time to lead our efforts. We would like to extend a special thanks and congratulations to those women who will serve in leadership roles in the upcoming year:

**PRESIDENT**

Lisa Barry Jenkins

**PRESIDENT-ELECT**

Crystal Allen Dallas

**SECRETARY**

Emily Kalla

**TREASURER**

Ally Melvin

**BOARD OF GOVERNANCE AT-LARGE MEMBERS**

Sunny Bellows, Sara Chamberlain, Jenna Donze, Liz Maritz, Tabitha Reuther, Shannon Stromath, Karen Davis (*Sustainer*)

**CHIEF OF STAFF**

Hillary Hunt Fiala

**COMMUNICATIONS**

Crystal Shaeffer-Flynn (*Director*) and Michelle Repplinger (*Assistant Director*)

**COMMUNITY IMPACT**

Danielle Randall (*Director*) and Keri Wood (*Assistant Director*)

**DIVERSITY, EQUITY & INCLUSION**

Ashley Battaglia (*Director*) and Abby Lutomski (*Assistant Director*)

**FUND DEVELOPMENT**

Katie Simek (*Director*) and Lindsay McCutcheon (*Assistant Director*)

**MEMBERSHIP DIRECTOR**

Beth Ann Riechman (*Director*) and Kathy Isaak (*Assistant Director*)

**OPERATIONAL EXCELLENCE**

Brittany Broombaugh (*Director*) and Allaina Blackwell (*Assistant Director*)

Congratulations also to our 2022-2023 Nominating Committee, which will be tasked with slating our next set of leaders: Cara Bast (*Director*), Kim Rayford (*Assistant Director*), Dot Fleshman, Anna Henderson, Olgs Marx, Mel McGavic, Shar Smith, Leah Wenger and Kathryn Wickenhauser.

Interested in learning more about JLSL leadership opportunities? Email [nominating@jlsl.org](mailto:nominating@jlsl.org).

# COMMUNITY NOT CONFORMITY

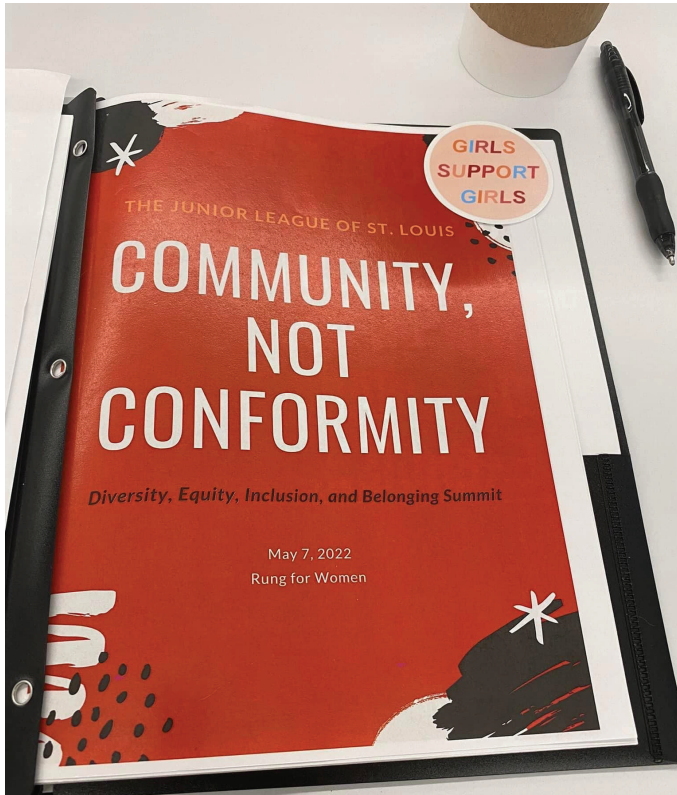
## JLSL'S INAUGURAL DIVERSITY, EQUITY, INCLUSION AND BELONGING SUMMIT



On May 7, 2022, JLSL members gathered on the campus of our new community partner Rung For Women to celebrate the inaugural Diversity, Equity, Inclusion and Belonging (DEIB) Summit. Hosted by the DEI team, this year's theme was centered on "Community, Not Conformity" and explored the unique experiences and paths each member took to eventually joining the Junior League through workshops, speakers and discussions.

The summit kicked off with an opening address from current JLSL President, Katie Duffin, and the obstacles she faced not only as the first openly gay president in the JLSL but also the difficulties of assuming the presidency at the onset of a global pandemic and as numerous racial injustices incited calls to action for systemic change. Participants also learned of DEIB resources available to members via ALJI from incoming President-Elect Crystal Allen Dallas as well as the evolution of the JLSL's DEIB efforts

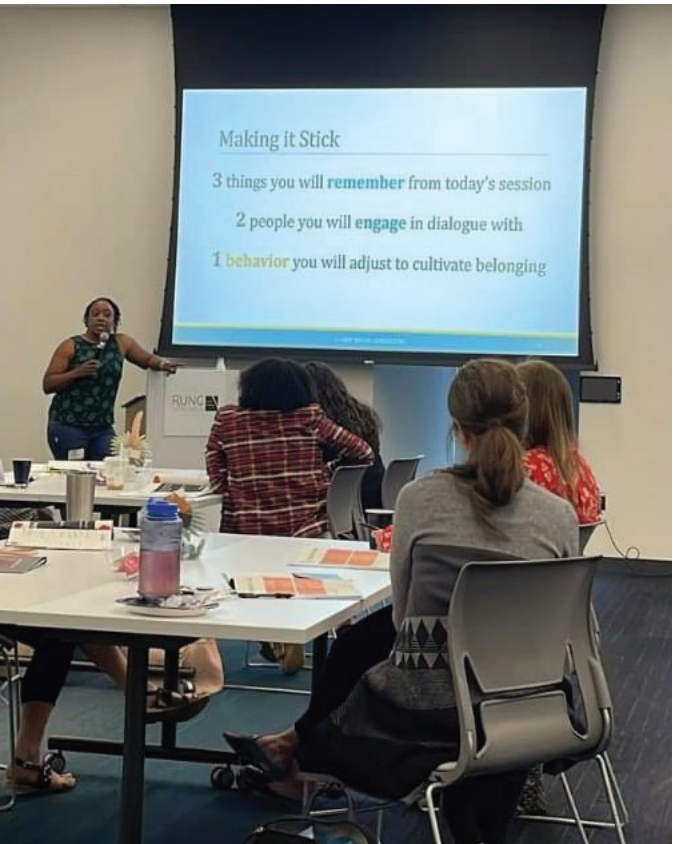




moving forward from Governor At-Large Sunny Bellows. Additional speakers included members Kimberly Rayford, Laura Binneboese and Ally Melvin who shared stories about their individual journeys to join and stay active in our organization. Assistant Director of Community Impact Danielle Randall then led participants in a workshop and candid discussion on inclusive language and suggested alternative rhetoric over lunch from a local vendor.

The summit featured Jessica Sharp, Founder and CEO of Sharp Brain Consulting, as the keynote speaker. Sharp led attendees through a discussion on belonging and our physiological need for it in order to feel safe and thrive in our environments. Sharp challenged members to identify two ways in which we can promote belonging in our everyday actions as well as how members can be stronger “organizational citizens” to promote a healthy culture of belonging within the JLSL.

Incoming Director of DEI Ashley Battaglia feels the first summit was a big success and an



example of the JLSL’s focus in fostering a sense of belonging for all members moving forward. “While success can be measured in different ways, my metric was the amount of vulnerability shown and candid conversations had by our attendees,”



Battaglia said. “Both of these were on display throughout the day.” The DEI team intends to make the DEIB Summit an annual event.





# MEET OUR MEMBERS

## NEW MEMBER: LUCY STEIS

**Q. What inspired you to become a member of the Junior League?**

I saw the impact that Junior League has on the community and the many opportunities that I could be a part of to help make that impact.

**Q. So far, what has been your favorite JLSL event?**

I love Bunco! It has been so nice to relax, socialize, and enjoy each other's company, while playing a fun game.

**Q. What is the best advice you've received from a JLSL member?**

Junior League is what you make of it. Get involved and get to know others.

**Q. What area of the JLSL are you interested in most?**

(Membership, Fund Development, Community Impact, Training, other)

I am interested in membership. I have met so many wonderful women and have learned that many women that are in the League are not originally from Saint Louis. The League has provided me with a community and I would love to help get others involved that are new to the area and who are looking for a community here in Saint Louis.

**Q. If you could travel back 106 years and ask a founding member any question about being in the JLSL, what would it be?**

What long term impact do you think you will make on the world?

**Q. What is your favorite thing to do in Saint Louis? Or what is one part of the area you are looking forward to exploring?**

I love going to Forest Park! Whether it's exploring the zoo, looking at art, enjoying a walk through the sunflower fields, or ice skating, I feel that it's a wonderful gem in Saint Louis.

**Q. If you could master a skill that you don't currently possess, what would it be?**

I wish I could learn more technical skills. I love learning about new apps or tech products that make my life more productive.

**Q. What area of Saint Louis metro do you live in?**

Sunset Hills

**Q. Where is your hometown?**

Saint Louis, MO

**Q. Job Title & Place of Employment**

Regional Admissions Counselor, The University of Mississippi (Ole Miss) -- Hotty Toddy!



## PAST PRESIDENT: SUE FELLING

**Q. What inspired you to become a member of the Junior League?**

I was invited by a neighbor and was excited to get to meet new people and get involved in the community.

**Q. So far, what is your favorite memory with JLSL?**

Being site chair for the Annual Conference held in St Louis for our 100th Anniversary. I also really enjoyed being on the JLSL committee that gave grants to area nonprofits (when we used to do that).

**Q. What is the best advice you've received from a JLSL member?**

Just try it.

**Q. How has the JLSL impacted your life?**

I have made some of my very best friends in JLSL. I have tried, and succeeded, at things I never would have imagined.

**Q. What is your favorite thing to do in Saint Louis?**

I love our zoo.

**Q. If you could master a skill that you don't currently possess, what would it be?**

WordPress!

*\*Editor's note – Sue currently helps maintain the JLSL website (jls.org) and is doing an amazing job.*

**Q. What area of Saint Louis metro do you live in?**

Des Peres

**Q. Where is your hometown?**

St Louis. I've lived here since 6th grade with a few years away for college

**Q. Job Title & Place of Employment**

Retired Nurse

**Q. What is your current JLSL placement?**

Website Manager and on Training Team

**Q. What positions have you previously held in JLSL?**

President, VP Training, VP Communications, VP Community Programs, Diversity Chair, Polo Chair, New Member Chair, and many more committees and leadership roles.

**Q. What advice would you give to someone who is on the fence about joining the JLSL?**

Why not give it a try. It is a great place to expand you horizons.

**Q. If you could travel back 106 years and ask a founding member any question about being in the JLSL, what would it be?**

How were you so brave?





SUSTAINING MEMBER/TRANSFER:  
SHANNON STROMATH

Q. What inspired you to become a member of the Junior League?

I joined the Junior League as a way to get involved in my community and a way to meet new people.

Q. What has been one of the favorite projects or teams you have been involved with in your Junior League career?

My favorite project was when the St. Paul, MN league did kids in the kitchen. On Saturdays we taught cooking classes to teens at a rec center. One Saturday we were teaching four boys ranging from 12-14. They were enthusiastic about learning and we all had a lot of fun.

Q. What is the best advice you’ve received from a Junior League member?

The league is more about helping the community, we help each other.

Q. How has the Junior League impacted your life?

Absolutely, the league led to my job promotion resulting in me moving to St. Louis! I was asked one year to be the finance manager which was not something I ever wanted to do. I’m so bad at math. But I knew that position was historically hard to fill, so I did it. During my job interview I talked about taking on that finance manager role. When I got the promotion they said one of the reasons I was chosen was because I took on a role I knew nothing about, didn’t really want to even, but I did and was able to learn new skills from it.

Q. What is your favorite thing to do in Saint Louis?

I still have a lot to explore, so far trying toasted ravioli at different places. So far Lemp Mansion is the best.

Q. If you could master a skill that you don’t currently possess, what would it be?

Speaking another language

Q. What area of Saint Louis metro do you live in?

St. Peters

Q. Where is your hometown?

Lake Elmo, Minnesota

Q. Job Title & Place of Employment?

Area Sales Manager at Danfoss

Q. What positions have you previously held in Junior League?

Nominating Director, Treasurer, Finance Manager, New Member Chair, Fundraiser Co-Chair. Member of Community, recruitment and fundraising

Q. What advice would you give to someone who is on the fence about joining the Junior League?

I tell people the league is a great way to meet people while helping others.

Q. If you could travel back 106 years and ask a founding member any question about being in the JLSL, what would it be?

What great things can the JLSL do next!



BOUTIQUE DIRECTOR:  
ERIN WELSH

Q. What inspired you to become a member of the Junior League?

I was moving from NYC to STL and was working out of my home. Thus, I thought this would be a great place to meet people.

Q. So far, what has been your favorite JLSL event? Too many to list!

Q. What attracted you to volunteer to work on the JLSL Boutique team?

I have always been passionate about product/retail/wholesale.

Q. What plans do you have for the boutique this next year?

We want the boutique to become the best gifting shop in STL.

Q. If you could travel back 106 years and ask a founding member any question about being in the JLSL, what would it be?

What did you hope to accomplish at the league 5, 10, 20 years from now knowing women want to be treated as equals.

Q. If you could master a skill that you don’t currently possess, what would it be?

I wish I was more computer savvy!

Q. What area of Saint Louis metro do you live in?

Central West End.

Q. Where is your hometown?

I was born on the East Coast, but was raised in the Midwest. I lived in NYC the longest, but I guess I would say MPLS.

Q. Job Title & Place of Employment

I am the Director of a Non Profit called Initiatives in Art and Culture. I also have a small consulting business.





# IN MEMORIAM

Honoring our beloved JLSL members and sustainers who we have lost this year:

- CHRISTY ADAMS
- SANDRA (HARPER) BRISCOE
- NIKKI GILLIS
- ELLEN JONES
- MARJORIE MCFARLAND
- MARGARET ZWART



# WHO’S OUR DRUE?

## DRUE LANE WEBSTER VOLUNTEER SERVICE AWARD



Since its inception at the Annual Membership meeting in May 1985, 58 Junior League of St. Louis members have been honored as recipients of the Drue Lane Webster Volunteer Service Award. Nominations are due in the spring each year, and winners are announced at that year’s Annual Meeting in May. This year we had two well deserving receipts:

### SUE FELLING ACTIVE DRUE LANE WEBSTER RECIPIENT



Often we say that a Drue Webster member is someone who flies under the radar, they do so many amazing things in the community and in the Junior League yet few of us actually know all that they do, that truly describes Sue Felling.

Sue has a commitment to her family and community since graduating with her

BS in Nursing from the University of Missouri – St Louis followed by her MBA.

Volunteerism has been a part of her life for a very long time! Her volunteerism includes:

- St Clement Church
- Foster Care Coalition of St Louis as a Board Member and Board Secretary as well as continuing with volunteer activities once off the board.
- Girl Scout Leader
- Community School – Volunteer, Committee Chair or Co Chair for the Book Show, Flower Sale
- Des Peres Women’s Tennis Association – Committee Chair/Co-Chair Coordinator



Currently she serves as

- A volunteer at College Church on the campus of St Louis University
- President of her Neighborhood Association
- Kirkwood School District NOW (Nutrition on the Weekend) Organization that began in 2019 that provides supplemental food for children in the Kirkwood School District on the weekend.

As an active Member of the Junior League for more than 20 Years Sue has volunteered in nearly every area of our organization! Many years taking on multiple placements.

Some of the highlights include;

- Junior League President from 2010 - 2012
- Nominating Committee Chair and Vice Chair
- HQ Task Force Member

- AJLI Annual Conference Committee Chair
- 100th Anniversary Gala Committee
- Fundraising Research, Development and Evaluation Committee Chair
- Personnel Committee Member
- Grant Board Committee Member
- Affinnia Health – Mother Group – Part of Day 366
- JLSL Leadership Development Committee Member
- Boutique Volunteer
- Website Manager

Sue chose Kirkwood School District NOW (Nutrition on the Weekend) as her nonprofit of choice.

## CAROLYN FARRELL DRUE WEBSTER AWARD SUSTAINER



Carolyn Farrell follows the path that Drue set forth. She is a natural Drue Webster recipient. As Member of the Junior League for more than 35 years she been a member of the League

Larks since day one. The group averaged 30 visits to nursing homes and retirement centers annually where they provide music therapy for the residents.

Married with 4 grown children and 7 grandchildren, her family is her pride and joy!

As very successful businesswoman, she has directed several family businesses and has served on their Boards for the past 32 years. Currently, she is the President of H&H Metal Fabrication.

Did I mention she has a wonderful singing voice? Along with the League Larks she is a founding member of the String of Pearls ensemble, a founding member of the LACE quartet that performs at private events and since 1988 has been a Member of the St. Roch Church Choir.

Her love of music led her to the St. Louis Symphony Orchestra where she has been a member of Symphony Volunteer Association since 1997. She was the president of this group from

2005-2007. During her tenure as president, she managed over 350 volunteers and 13 committees, including the annual Gypsy Caravan. She has been on the St Louis Symphony Board of Trustees since 2008.

Currently, she's the co-chair of the Leadership Circle Committee which recruits and maintains donors. She has also been involved with the Instrument Playground which brings musical instruments to school age children, and she has been a docent for the Powell Hall Tours.

As a member of the Women's Society of Washington University she has served as Chairman of the Business Committee, Board and Advisory Board Member, Active in the "Composing a Life" Panel Event, Scholarship, Membership and Leadership Award Committees.

While serving as the President during the 50th Anniversary year, more than 100 new members were added and more than \$38,000 in scholarship funds were raised.

Since joining the St. Louis Art Museum Friends Board in 2013 she has served as the Vice Chair of

the Friends Board and been named to the Board of Trustees.

As a St. Louis Public Library Foundation Board member, she was selected as the first woman to serve as the Chairman of the board. A position she currently holds.

Since joining the St. Louis Woman's Club in 2005, she has served on nine committees, served as a Board Member, formed a Marketing Committee to recruit new business and served as the President where she managed 130 members, the Board of Governors, 5 full time staff, member programs and the historic building.

She has also been:

- Co-Chair of Cashbah Auction at St. Louis University High School raising more than \$300,000
- A Board Member of the Heritage Account, Inc.
- National Society of Arts and Letters, Saint Louis Chapter Board Member and hospitality chair

Carolyn's charity of choice is the St. Louis Public Library Foundation.



***Congratulations to Sue and Carolyn! Our true Drues!***



ANNUAL AWARDS MEETING  
DRUE LANE WEBSTER VOLUNTEER SERVICE AWARD





## 20 YEARS OF COMMUNITY PARTNERSHIP WITH NOTTINGHAM CAJT SCHOOL



Through our 20- year relationship with our community partner Nottingham CAJT High School, we have formed a wonderful connection with the staff and partners there. As we entered our 20th year, our committee and partners at Nottingham CAJT had a full year of activities planned. Committee Co-Chairs Beth Ann Reichman and Karen Davis lead the Nottingham / Glass Slipper Committee

### BACK TO SCHOOL

To kick off the year, students were welcomed back by school leaders, two of our league members with a balloon arch, yard sign and cookies provided to the students during the first day. For some of the students, this was the first time back to the school in over a year.

### TOKEN OF LOVE

On February 14th, the Token of Love Distribution event was held to donate necessary supplies to best equip the Educators, Administrators, and Students for success. With generous donations from our community partners, the JLSL members, and the community, we were able

to provide the students with PPE, personal care items, and warm winter items. Students could walk through each section and fill up bags with items that they wanted to take home. After the event, teachers brought the JLSL volunteers handmade cards from the students thanking them for the wonderful donations and for helping out so much throughout the years.

### SPRING CARNIVAL – NEW MEMBER PROJECT

April showers didn't stop our carnival celebration at the Nottingham CAJT High School on April 13. Oblivious to the stormy weather outside, the atmosphere in the school gym was sunny with a steady rotation of Nottingham students enjoying carnival games led by JLSL volunteers Karen Davis, Patricia Dolson, Jennifer Eisenbath, Lisa Barry Jenkins, Jackie Neuschaefer, Margaret Ponder, Rebecca Pooker, Beth Ann Riechman, Jen Rogers, Ali Salter, Lucy Steis, Emily Tiefenbrunn, and Stephanie Uitenbroek. The carnival was held to celebrate the 20-year partnership between the Junior League of St. Louis and the Nottingham CAJT High School, a St. Louis school with the mission to build positive character and enable a successful transition from school to post-secondary independence for students with a development delay and



an educational diagnosis such as autism or intellectual disability. The carnival was organized as part of the Fall 2021 provisional class' new-member project in collaboration with sustainers and the JLSL Nottingham committee. Nottingham students were treated to lunch, games with prizes, face painting and a "cookie walk" as part of the day's festivities.

Glass Slipper Prom event. This event provides the students with a full Prom experience.

Kudos to our amazing Sustainers for their continued support and dedication to Nottingham CAJT School!

### ABOUT NOTTINGHAM CAJT HIGH SCHOOL

The Nottingham School across from Francis Park is a job training high school for students with developmental delays, with the ages of students ranging from 13-21 from all across St. Louis City and County. They help over 125 students learn life skills to work after they graduate in our community. Recognition: National School of Character (2016) Promising Practices in Character Education Award Recipient (2019).





# TOP GOLF & OTHER FUNDRAISING EFFORTS



Many of our community projects and fundraising events had to be canceled or adjusted due to the effects of the COVID-19 pandemic. Our Fund Development Team worked hard to adjust timelines and events as needed due to the safety of our members and guests.

Despite the hardships faced this year, Fund Development was still able to hold our Top Golf event, keep our boutique open, continue the sale of cinnamon rolls, host a variety of virtual fundraisers, social fundraising events and more!

Our second Top Golf event in August may have been small in turnout but raised over \$3,800 for the Junior League. The evening started with guests directed to their bays for food and drink and instructions on how to play. Participants enjoyed a dinner, auction, and a chance to



network with members and their friends and family.

Annual Giving is one of our biggest fundraisers that helps The Junior League of St. Louis meet our commitment to promoting voluntarism, developing the potential of women, and improving the community through the effective action and leadership of trained volunteers.

As a League, we go to our sponsors, community partners, and potential grant agencies and share our rich history and the impact we have had in the community over the past 106 years. We share how special our members are and how they believe and support our mission enough to give more than their annual dues. By showing how supportive, and confident our members are in the League by their giving efforts during Annual Giving, other organizations are more inclined to support us as well.

Each donation to the Annual Giving allows us to:

- Support community engagement through programs, including Strong Women & Families Health & Resource Fair, Kids in the Kitchen, Community Impact projects, League Larks and Nightingales, and Day 366.
- Recruit and retain talented members.
- Offer training and leadership development opportunities.

- Provide essential support for our day to day operations
- Commit to building the future of our organization
- Adapt and remain effective during the pandemic

## WAYS TO GIVE

- Write a check to Junior League of St. Louis, indicating "Annual Giving" in the memo. Checks can be dropped off or mailed to Junior League of St. Louis 106 N. Kirkwood Rd. St. Louis, MO 63122.
- Donate online.
- Ask your employer to match your donation to JLSL's Annual Giving.



## EARN YOUR APRON HELP OUT THE JLSL BOUTIQUE

The JLSL Boutique has announced a rewards program for signing up for a shift during the 2021/2022 League year. Any member who completes five shifts will earn her own Junior League apron. Congratulations to these women who have earned their apron this year:

- JEN ROGERS  
ALEXANDRA NUCCIO  
MARGARET PONDER  
RACHEL HASSANI  
GINA SIGILLITO  
SUE FELLING  
KAREN DAVIS  
PATTY DOLSON





# NOW RECRUITING THE NEW MEMBER CLASS

2022 —2023

As you may know, we are actively recruiting our Fall 2022 class - with all applications for this class due by August 10th!

You can help support our efforts, in the following ways:

- 1) Please access our public facing Junior League of St Louis Facebook page and mark yourself "interested" in attending our New Member Info Session Events. Even if you do not plan on attending (and you are always welcome) - this helps our FB algorithm to spread the word on these events.
- 2) Please share our New Member Info Session Facebook Events to your network!
- 3) If you know anyone interested in membership, please send them to: [recruiting@jlsl.org](mailto:recruiting@jlsl.org)



Become a  
**MEMBER**

**J** JUNIOR LEAGUE OF  
ST. LOUIS



## LET'S PLAY BUNCO!



Join your fellow JLSL members for a fun night of Bunco! Bunco Nights are held the first Monday of the month at JLSL Headquarters. Grab a few of your friends and join us for a fund night out and some friendly competition. Bunco is open to all and a great way to connect with members both new and old.

Check Digital Cheetah for dates and sign up.





# JLSL IN THE COMMUNITY

Cheers to gathering together this year! Check out our members out and about in the community. Whether volunteering at a CI shift, gathering for brunch or Bunco or getting the opportunity to connect in person for membership meetings and GMMs our members showcased their dedication and commitment to our JLSL community.

*Here's hoping 2023 brings more opportunities for us to come together!*







# JUNIOR LEAGUE OF ST. LOUIS

## UPCOMING EVENTS

### VIRTUAL RECRUITING EVENT

Tuesday, August 9, 2022

### DEADLINE TO JOIN THE 2022-2023 NEW MEMBER CLASS

Wednesday, August 10, 2022

### DINNER CLUB

Thursday, August 11, 2022 at 6:30 PM

### COMMUNITY ENGAGEMENT SHIFT

Saturday, August 13, 2022 at 9:00 AM

### BOOK OF THE MONTH CLUB

Sunday, August 14, 2022 at 12:00 PM

### NEW MEMBER MEETING

Wednesday, August 17, 2022 at 6:30 PM

### GENERAL MEMBERSHIP MEETING

Thursday, September 29, 2022 at 6:30 PM



**Like us on Facebook**

[facebook.com/juniorleaguestl](https://facebook.com/juniorleaguestl)



**See us on Instagram**

[instagram.com/juniorleaguestl](https://instagram.com/juniorleaguestl)



**Use our Hashtags**

#JLSL #JuniorLeagueSTL #WhyJLSL #JLSLStrongWomen #JLSLSWF