



ANNUAL REPORT

2013-2014

100 Years



**President Maureen
Strasheim
2012-2014**

As I read each page of this Annual Report, I am yet again amazed and inspired by how much the Junior League of St. Louis accomplished over the last year! Our Done-in-a-Day projects continue to be very popular among our members and play a vital role in assisting other nonprofits in the St. Louis area. Our longer term projects, such as St. Louis Family Theatre and our Strong Women & Families Health & Resource Fair create a lasting impact on those they serve. Our trainings within our General Membership Meetings and through our Leadership Development Series are an important part of our mission and provide that unique experience that only the JLSL can give.

The JLSL community projects and trainings could not occur without the support of our fundraisers such as our Kitchen Tour and our Cinnamon Roll sales. The dedication our members show to making sure these fundraisers are successful is uplifting and an example of how fun it can be to raise money for a cause you believe in!

Celebrating the 100th Anniversary of the JLSL gave me the opportunity to meet so many women who were impacted by being members of the JLSL! They tell stories of their friendships, the projects they worked on, and the skills they developed all while working on table waits, stuffing envelopes and sitting through meeting after meeting! These women truly believe in the mission of the JLSL and have demonstrated their support by attending our wonderful anniversary luncheon and through the generosity of their contributions to our 100th Anniversary Campaign. The JLSL would not be the vital organization it is today without their support, and for that I am truly grateful.

Writing this letter is my final official act as President of the JLSL from 2012-2014. The last two years have been filled with many challenges and opportunities, some foreseen, but many unanticipated. I was very fortunate to be surrounded by other JLSL members I respect, where I could get their input, see issues from their perspectives, and come to resolutions. I have found that I enjoy leading from consensus and I value the opportunity to interact with JLSL members ranging from New Members to our most seasoned Sustainers.

I want to thank the JLSL for the opportunities it has given me and I look forward to continuing to spend time with JLSL members in my new role as just a JLSL Active.



Episodic Volunteer Opportunities/Done-In-A-Day

Episodic Volunteer Opportunities provide JLSL members with short-term volunteer opportunities in the community. The following are activities that Junior League members participated in during 2013–2014:

First Book-St. Louis



To celebrate First Book-St. Louis' 15 years of giving books to low-income children in the greater St. Louis area, First Book-St. Louis held The Largest Book Party in Saint Louis on September 28th. More than 85 organizations serving disadvantaged children were invited to attend with four to eight year olds in their program. The morning consisted of story time, snacks and picking out new books to take home.

JLSL volunteers helped with set-up and clean up, staffed the book and food tables, welcomed and directed groups, staffed the check-in table and performed other miscellaneous tasks. Some volunteers were assigned a specific group to stay with throughout the morning to help guide them through the activities.

Helping Hand-Me Downs

Helping Hand-Me Downs is an organization that partners with Birthright, Nurses for Newborns and hospitals to obtain the names of needy mothers, moms-to-be and newborns. They work to secure donations of clothes and toys (and sometimes food) for these moms and infants to help support their basic needs. On October 5th, November 2nd and January 25th, JLSL volunteers had the opportunity to sort through donations, pack them up in boxes and personally deliver them to the families.



Food Outreach

Food Outreach provides nutritional support and enhances the quality of life for men, women, and children living with HIV/AIDS or cancer in the St. Louis area. On October 5th, December 7th, and March 29th, JLSL volunteers worked directly with the clients of Food Outreach and also helped cook, package and store homemade meals.



My Bodyworks Concert

My Bodyworks Concert on November 9th, was a fun and free event for families and kids of all ages across the St. Louis area. The concert was sponsored by University City Children's Center, the LUME Institute, and PNC Grow Up Great. JLSL volunteers helped set-up and break down the event, assisted teachers with fun activities for the kids, and helped to usher families into the concert.

St. Louis Area FoodBank

JLSL New Members helped pack and sort food at the St. Louis Area FoodBank's Distribution Center on November 16th. The FoodBank helps over 57,000 hungry people each week by distributing food through over 500 partner agencies.

Circle of Concern

Circle Of Concern feeds the hungry and provides long-term and emergency assistance to low income families living in west St. Louis County. Their Holiday Basket program provides a turkey, pie, fresh produce and all the fixings for a Thanksgiving dinner for over 500 hungry families. On November 21st, JLSL volunteers assisted with filling the Holiday Baskets.

Episodic Volunteer Opportunities Continued

Kirkwood Train Station

On November 30th, JLSL volunteers helped clean and decorate the Kirkwood Train Station for the holidays. This historic station, located in downtown Kirkwood, steps away from the Junior League of St. Louis' Headquarters and Training Facility, is entirely run by volunteers.



Foster and Adoptive Care Coalition

Foster and Adoptive Care Coalition receives hundreds of thank you notes from foster kids for holiday gifts they receive through the Little Wishes program. On February 1st, JLSL volunteers assisted with matching up the thank you notes with the donors in order to forward the thank you notes to the correct donors. This included putting all of the thank you notes into numerical order, matching them with donors and labeling and stuffing envelopes. The Foster & Adoptive Care Coalition strives to create permanency in every foster child's life by recruiting and supporting foster and adoptive families in the St. Louis metropolitan community.

The Health Institute STL

Let's Move! is a program to solve the epidemic of childhood obesity. The Health Institute STL held their 4th annual Let's Move! event at YMCA O'Fallon Park Rec Complex on February 8th. For the second year in a row City Greens had a table educating participants about what the market does. JLSL volunteers assisted with this fun event.

The Center for Women in Transition

JLSL volunteers assisted in beautifying the facility and organizing items in the housing facility for The Center for Women in Transition on March 8th. JLSL volunteers also helped with gardening and yard cleanup. Women in Transition operates two transitional housing facilities which are part of a comprehensive program designed to help individuals and families move from crisis to stability and self-sufficiency.

Nottingham Community Access and Job Training (CAJT) High School

On May 2nd, JLSL volunteers worked one-on-one with developmentally challenged high school students helping them get ready for their prom that afternoon. Volunteers also helped prep the cafeteria for the prom luncheon that took place directly before the prom. This heartwarming event is a favorite among JLSL members. CAJT is a public separate day facility which provides vocational preparation, occupational guidance, and functional academic instructional activities in a school based, community oriented school-to-work program for students with moderate/severe developmental disabilities ages 14 through 21.



JLSL research found a great need for healthy unprocessed food in a variety of underserved areas. The City Greens/Food Desert Project is a collaboration between City Greens Produce and the JLSL to expand their brick and mortar storefront and mobile market to fight lack of food access in the St. Louis community. Residents of food deserts face nutritional challenges evident in diet related community health outcomes. JLSL members helped shoppers by showing/promoting the market's various fresh foods, including locally grown vegetables, meats, eggs, etc. They also helped stock shelves, tidy the store, and assisted the market's manager with any other needed tasks.

The Junior League of St. Louis welcomed the following 43 New Members:

Lori Bell
Tara Bracher
Ashley Carter
Whitney Cherpitel
Danielle Cichowic
Sarah Demaree
Sarah Dlugolecki
Kara Drake
Kara Evans
Taylor Ferguson
Emily Fishman
Dot Fleshman
Kathy Freeman
Kacie Gebhardt
Athena Gieseler

Dr. London Gleghorn
Leslie Goodrich
Kristen Harms
Cara Hoffmeyer
Kate Jozefiak
Laura Kanney
Laura Kasak
Charlotte Kiang
Katie King
Elizabeth Kuhn
Jennifer Lenzi
Sada Lindsey
Kate Lyford
Stephanie Marhefka
Meghan Mathison

Ellen Noel
Katie Owens
Kylie Piatt
Caitlin Reynolds
Courtney Schmiemeier
Krissy Schwedtmann
Jennifer Simon
Barbara Summers
Sheryl Taylor
Jacqueline Walker
Katherine Wallace-Hodel
Regina Wells
Jenna Yungck Ryrle



Kids in the Kitchen Projects

The Kids in the Kitchen Projects were highlights of the 2013-2014 year for the New Members. New Members visited Epworth Children and Family Services and Grace Hill to teach school-aged children about proper nutrition as well as fun ways to stay active.



*The Junior League of St. Louis
Centennial Luncheon*

A Toast to the JLSSL

Thursday, February 6, 2014

11:30 a.m. to 2:00 p.m.

*Hilton St. Louis Frontenac
Clayton Ballroom
1335 South Lindbergh Boulevard
Frontenac, Missouri*



JLSSL celebrated its 100th Anniversary with the first signature event, the Junior League of St. Louis Centennial Luncheon: A Toast to the JLSSL. Despite frigid temperatures outside, more than 200 members, former members and guests attended this milestone event remembering friendships, sharing stories of success and marveling at the many improvements made in the St. Louis region by the Junior League of St. Louis. The talented League Larks performed and attendees found exciting items offered by the boutique vendors. Speakers included Honorary Chair Susan Block, President Maureen Strasheim, Sustainer Betty Sims, and Luncheon Chairs Jo Anne "Midge" Crider, Pat McKinnis and Bette Mueller.





Approximately 700 Junior League members from around the world attended the 2014 Association of Junior Leagues International (AJLI) Annual Conference in St. Louis in May. The Annual Conference is a dynamic forum of training sessions combined with networking and skill building activities. The JLSL was honored to be the host city of the conference during JLSL's 100th Anniversary year.

The conference was held at the Renaissance Grand Hotel and offered JLSL members an opportunity to attend conference sessions, earn a fundraising credit by selling JLSL cookbooks and Cinnamon Rolls in the exhibit hall, and earn a training credit by serving at the registration/hospitality desk.

The AJLI Conference Site Committee, led by Sue Felling, organized tours for conference delegates that included a Cardinals baseball game, a tour of the Arch with a riverboat cruise, a tour of Anheuser-Busch InBev Brewery, a St. Louis Trolley tour, and shopping in downtown Kirkwood with a visit to the JLSL's Headquarters and Training Facility.

AJLI presented the JLSL with a plaque commemorating Junior League of St. Louis' 100th Anniversary and a plaque recognizing JLSL for being the host city of the conference.



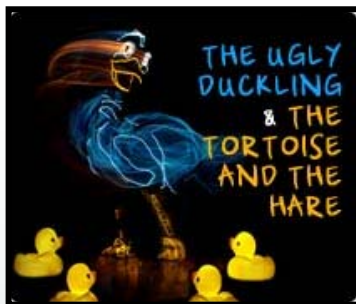
St. Louis Family Theatre Series

Celebrating its 26th year in the community, this program introduces over 20,000 St. Louis area school children and their families to live theatre annually. Over the years, the St. Louis Family Theatre Series' (SLFTS) performances have entertained almost a half million young people. The SLFTS began in 1986 as a Junior League of St. Louis (JLSL) priority group, then called Audience of the Arts. Because it made such a significant contribution to the community by touching the lives of so many children, it was made a JLSL perpetual project in 1989, on JLSL's 75th anniversary.



JLSL members working with SLFTS have several unique training opportunities which include serving as a docent in the classroom or as an usher at the theatre. Many local schools plan field trips to see performances each year. In preparation for the "theatre experience", a docent will visit each classroom and talk about what to expect at the theatre and during the performance. The children can ask questions, since for many of them this is the first time they will experience "live theatre". As an usher, JLSL members assist the young theatre-goers from the minute they walk in the door, ensuring that their theatrical experience is enjoyable and memorable.

2013-2014 PRESENTATIONS



Johnny Appleseed



St. Louis Family Theatre gratefully acknowledges the following sponsors
in addition to the Junior League of St. Louis:

American Eagle Credit Union
Arts & Education Council of Greater St. Louis
City of Florissant
Florissant Fine Arts Council
Missouri Arts Council
Regional Arts Commission

Saturday, April 12, 2014 from 10am - 2pm

STRONG WOMEN & FAMILIES

health & resource fair

Everything A Family Needs In One Day!

Free Event

- Raffles
- Children's Activities
- City Greens Food Truck
- Exercise Demonstrations
- Free Workshops

Medical Screenings

Copays May Apply

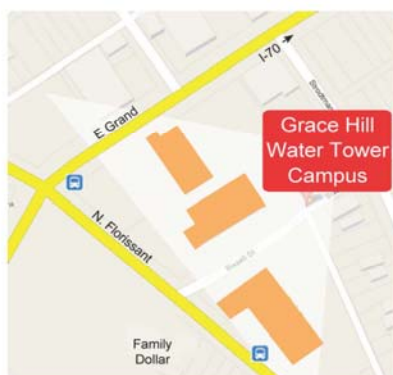
- Physical Examinations
- Eye and Hearing
- FREE Dental for Children
- Blood Pressure

Access Professionals and Resources

Over 60 Vendors
Head Start enrollment
Infant CPR Classes
Family Support Services

Affordable Housing
Employment Counseling
Legal Consultation
Financial Literacy

Medicaid Enrollment
Health Insurance Marketplace
(Obama Care)
Gateway To Better Health



Located at:

Grace Hill Water Tower Campus
4414 N. Florissant, 63107



Visit jlsf.org or call (314) 822-2344 or (314) 584-6858 for more information

STRONG WOMEN & FAMILIES

health & resource fair



2014 Statistics

309 participants signed in at the Health Center

Clinical Services:

- Pediatric: 17
- Dental: 18
- Optometry: 20
- Hearing: 5
- OB: 3
- Internal Medicine: 7
- Orthopedic screenings by Shriners: 3
- GH follow up appointments set: 29
- Chronic Disease referrals made: 20
- HIV tested: 3

Other services

- Gateway applications: 6
- Blood pressure screenings: 15
- WIC: 36 received information and one was issued a WIC food voucher
- Infant CPR Training participants: 12
- YMCA information for potential application: 30
- St. Louis ARC – developmental disability education: 25
- St. Louis City - Lead education: 40
- St. Louis Health Department: 40 education
- Head Start pre-applications: 14



The Junior League of St. Louis League Larks provide daytime entertainment and interaction with the elderly community of St. Louis. During 2013-2014, League Larks performed at the following facilities:

Alexian Brothers Lansdowne Village
Autumn View Gardens
Bethesda Dilworth
Bethesda Meadows
Cape Albeon
Cardinal Ritter Adult Day Care Center
D.A.R. Luncheon at the Gatesworth
Dubourg House
Family Partners Adult Day Care
Friendship Village Chesterfield
Friendship Village South
JLSL Centennial Luncheon
Mari de Villa
Mark Twain Manor

Mary Ryder Home
Mercy Seat Apartments
Missouri Veteran's Home
Nazareth Living Center
Parkside Towers
Richmond Terrace
Siteman Center for Advanced Medicine
St. Andrew's of Jennings
St. Elizabeth Adult Day Care-Lemay
St. Elizabeth's Adult Day Care Center
St. Joseph Apartments
St. Louis Altenheim
St. Michael and St. George
The Riverview



The Nightingales, a night-time JLSL choral group that provides musical entertainment and interaction with senior citizens in retirement centers, performed at the following facilities in 2013-2014:

Ahepa 53 Apartments
Alexian Brothers – Sherbrooke
Autumn View Gardens
Delmar Gardens West
Lutheran Senior Services at Laclede Commons
Lutheran Senior Services at Richmond Terrace
Manor Grove
Mary Ryder Home

Provisions Living
Sarah Community
St. Louis Altenheim
St. Luke's Surrey Place
Sunrise Assisted Living
The Mary Culver Home
The Riverview
West County Care Center

2013-2014 Leadership Development Series Classes

This year marked the second year of a three year rotating Leadership Development Series, which included the following topics:

Planning for Your Future

Speaker: Aaron Wrenn
Financial Advisor
Edward Jones

Volunteer Retention and Satisfaction

Speaker: Barry Rosenberg
Senior Lecturer
George Warren Brown School of Social Work at Washington University in St. Louis

Setting and Achieving Goals

Speaker: Martha Feeback
Membership Manager for Texas and St. Louis
Catalyst, Inc.

The Art of Board Service

Speaker: Michelle "Mike" Ochonicky
Recently Retired Executive Director
Boardlink STL

Delegating

Speaker: Mary Dedeaux-Swinton
JLSL Volunteer

Strategic Planning

Speaker: Professor Mark Gaynor

A yearly LDS certificate is earned by members who attend at least five of the courses. The following JLSL members received yearly certificates at the Annual Meeting in May:

Mary Dedeaux-Swinton and Gretchen Gaynor

At the annual meeting in May, Board Awards were presented to the Team Leads, the Nominating Committee, Megan Richter, the 100th Anniversary Steering Committee, and the AJLI Site Committee.



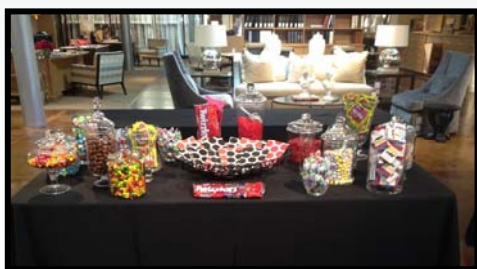
4th Annual A Gathering Place Kitchen Tour and Toast of the Tour Party Were a Huge Success!



The Kitchen Tour and Toast of the Tour Party have turned into can't miss and popular events for League members and members of the community. Building on traditions from the past three years and offering new and exciting experiences, this year's events were a great success.

The festivities kicked off with the Toast of the Tour party on Friday, April 25th at the Interior Design Center of St. Louis. Activities included a raffle for great prizes, a celebrity chef apron auction, delicious food, which included a candy bar, and fun drinks.

On Saturday, April 26th, seven beautiful kitchens from Chesterfield to the Central West End were on display.



Toast of the Tour Party: 142 attended
Kitchen Tour: 195 attended

Net Income: \$14,498



Many thanks to the following sponsors:

Gold Plate Sponsor

Beck/Allen Cabinetry

Silver Plate Sponsor

Karr Bick Kitchen + Bath

Media Sponsor

Ladue News

Toast of the Tour Party Sponsor

IDC Interior Design Center of St. Louis

Bronze Plate Sponsors

Emerson

Martin Custom Builders, LLC

Next Project Studio

Perspective Cabinetry & Design

A Fresh Approach to the JLSL's Work

By Maureen Strasheim, President, and Allie Chang Ray, President-Elect

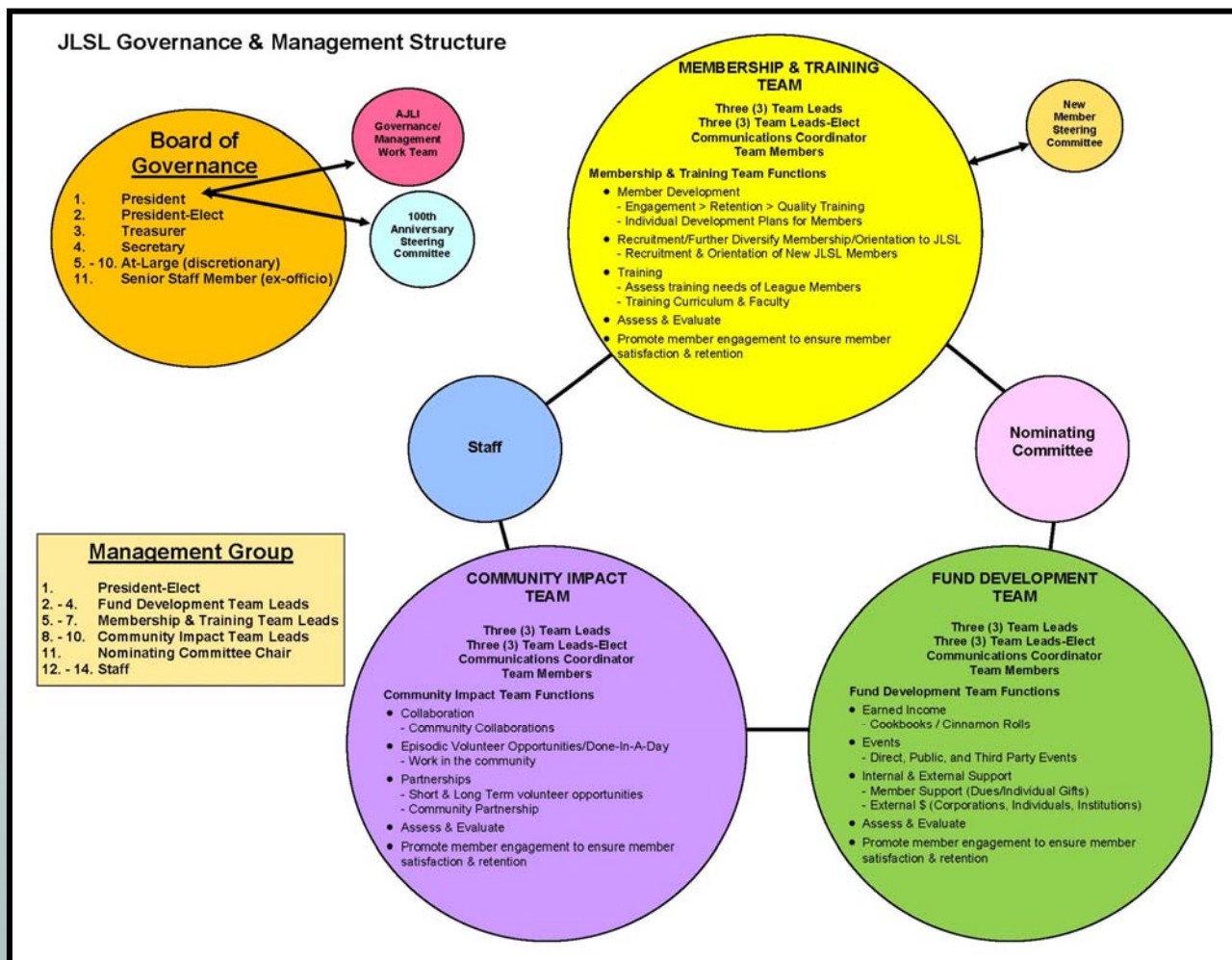
Last year, JLSL members were made aware of the challenges the League had been facing for several years when they understood the imbalance between the number of committees and the number of members placed on committees. This evaluation complemented the JLSL's coordination with AJLI in separating the functions of governance and management. The result was a favorable vote by the JLSL membership to move forward with creating a new organizational structure that allows more flexibility at all levels.

Beginning June 1, 2013, the President serves as the chair of the Board of Governance, and the President-Elect facilitates the Management Group, which is made up of nine Team Leads (three from each Team), as well as the JLSL Staff, the Nominating Committee Chair, and the New Member Steering Committee Chair. The Board of Governance and the Management Group met several times over the summer, both in-person and through FUZE online meetings using web conferencing technology. Further, both groups are utilizing Group Share for increased communication and collaboration.

At the Board's summer retreat, key goals were identified for this year, including: member retention (which encompasses members' satisfaction with training, member connectedness, and developing deeper relationships with the JLSL), communication within the JLSL, improved evaluation tools, and increased fundraising. Each time the Board of Governance meets, Board members will review materials that will help determine if the JLSL is working toward meeting these goals.

The AJLI Action Learning Team (ALT) Work Group has assigned a member to the Board of Governance, Management Group, and each Team to observe and offer suggestions about how each group is functioning. These findings will be shared with AJLI as part of the JLSL's agreement to serve as an Action Learning Team in the areas of governance and management.

The Board of Governance and Management Group are excited about working differently but in coordination with one another while leading the JLSL into its next 100 years.



2013-2014 MANAGEMENTCommunity Impact Team Leads

Natalia Marek Griffin
Mary Ellen Helmkamp
Shamonie Latham

Membership & Training Team Leads

Gretchen Gaynor
Mary Dedeaux-Swinton

Fund Development Team Leads

Julie Kearbey
Nancy Logan
Lori Ramsey

Nominating Committee

Chair: Patty Dolson
Vice Chair: Gen Frank
Kimen Brinkley
Michelle Dillon
Jeanne Flowers
Julie Kearbey
McKenna Parks

New Member Steering Committee

Chair: Amy Ploetz
Chair-Elect: Valerie Harris
Kristina Abarquez
Megan Maher
Liz Maritz
Navonna Morrison
Eileen Niesen
Susan Schenberg
Tiffany Whitehead

AJLI Action Learning Team

Chair: Susan "Sam" Cocking
Ashley Bryan
Debbie Cason
Carrie Crompton
Karen Davis
Patty Dolson
Jeanne Flowers
Janet Mika
Sally Petty
Allie Chang Ray
Maureen Strasheim

100th Anniversary Steering Committee

Chair: Maureen Strasheim
Jo Anne "Midge" Gannon Crider
Sue Felling
Tammy Hardesty
Pat McKinnis
Bette Mueller
Sally Petty
Joanne Strathearn
Carrie Wenberg
Heather Winsby

Sustainer Council

Chair: Frances Gay
Midge Crider
Mimi Denes
Ida Early
Barbara Ferman
Dotti Fischer
Pat Fogle
Margie Franz
Joan Hagedorn-Ball
Karen Heath
Lynn Hill
Ellen Jones
Diane Kerckhoff

Sally Key
Sally Lefler
Linda Lewis
Jane McElwee
Karen McFarland
Marjorie McFarland
Roberta Mikus
Karen Musick
Anne Stone
Joanne Strathearn
Jane Towater
Liz Vann
Becky Zaccarello





DRUE LANE WEBSTER *Volunteer Service Award*



Bill Webster, Jr. left, with 2014 Drue Lane Webster Volunteer Service Award recipient, Karen Davis, and Patty Dolson, the 2013 Drue Lane Webster Volunteer Service Award recipient.

The nomination for Karen Davis, JLSL Active, read in part, "She is a hard worker for the JLSL and yet always under the radar and never doing things for the fame but doing them for the betterment of the JLSL, the membership and the community." This is precisely what the Drue Lane Webster Award is all about – recognizing those JLSL members who volunteer with a selfless and caring attitude, and exemplifying the spirit and purpose of the JLSL.

Since becoming a member in 2004, Karen has served in numerous committees including Investments, Strategic Planning, Standards and Placement, Member Connections, Spring Market, Cinnamon Rolls, New Member Steering, Diversity,

Volunteer Training, Membership Meetings and the AJLI Governance & Management Work Team. She was the Chair of some of these committees and was also the JLSL's Budget Chair as a 3rd year Active.

In 2011, Karen completely revamped the Leadership Development Series. Not only was the attendance at her events at an all-time high, she took on a training session at a moment's notice when the presenter was a "no show." She received great marks from the attendees that night and her training was remarked as being "thorough, clear and concise."

In the community, she has been involved with many organizations as an avid fundraiser and volunteer including various events with the American Cancer Society, Nurses for Newborns and Little Wishes. Since 2009, she has been involved with CHADS (Communities Healing Adolescent Depression and Suicide) Coalition.

Currently, she is on the CHADS Board and this year chaired their main fundraiser, Kids Walking for Kids. So it is no surprise that Karen chose to give CHADS Coalition the \$500 award that accompanied her selection as a Drue Lane Webster Award recipient. Karen is employed by Royal Banks of Missouri where she is the Executive Vice President, Chief Financial Officer and Cashier.



The Drue Webster Committee with Bill Webster, Jr. at the May 22, 2014 Annual Membership Meeting

By Heather Winsby, Drue Webster Committee Member

**2014-2015
CENTENNIAL CHALLENGE AND
ANNUAL GIVING CAMPAIGNS**

Gifts to the JLSL Centennial Challenge and Annual Giving Campaign provide vital funds to support JLSL, its mission, training, and community programs.

Centennial Challenge \$1,000+

Susan Block
Christine Chadwick
Susan "Sam" Cocking
Jo Anne "Midge" Gannon Crider
Claire Devoto
Ida H. Early
Sue and Chris Felling
Margaret O. Franz
Karen K. Goodman
Dudley Grove
Becky Hauk
Lynn Hill
Amy Holland
Christy F. James
Ellen Jones
Diane Kerckhoff
Sally Lemkemeier
Jennifer McDonnell
Karen McFarland
Patricia McKinnis
Elizabeth Mueller
Susan B. Musgrave
Julie Otto
Elly Painter
Allie Chang Ray
Marilyn Schnuck
Susanne W. Shepherd
Betty Sims
Stephen and Kathryn Snodgrass
Tegner Stokes
Fred and Maureen Strasheim
Joanne Strathearn
The Drue Webster Committee
Carrie Wenberg

Gold Level \$500—\$999

Ann Beck
Jeanne Crawford
Mimi Denes
Sandra Dillard
Gretta Forrester
Chris Lineback
Lynn M. Rassieur
Connie Schnuck
Victoria Sheehan
Lisa Shepherd
The Shepherd Foundation
Jane Towater

Silver Level \$100—\$499

Dorothy L. Ahern
Katherine "Boo" Altwater
Patty Alvarez
Anonymous
Jennifer Avery
Carole J. Barnett
Marion Black
Jan H. Boehm
Candy Caciolo
Debbie Cason
Heather Chaney
Mary Ciapciak
Carrie Crompton
Gretchen G. Davis
Mary Dedeaux-Swinton
Patty Dolson
Judy Dude
Dorcas Dunlop
Ann Eisel
Susan Elliott
Carolyn G. Farrell
Edie Fay
Barbara Ferman
Pat Fogle
Ann Frawley
Virginia M. Gaebe
Nicki Gillis
London Gleghorn
Elizabeth A. Goad
Leslie Goodrich
Mary Griggs
Dr. Nancy L. Green
Kris Grigsby
Pamela Gunn
Marilyn Haberle
Kay Means Harbison
Katherine P. Harper
Karen Heath
Joni Karandjeff
Sally Key
Wally Klein
Lesley Knowles
Nancy Kranzberg
Pam Krekeler
Abigail Lambert
Marti Lanese
Sally Lefler
Joanne Liddy
Elizabeth "Lisa" Lineback
Nancy Logan
Connie Lohr
Judith N. Lozier
Courtney A. Lynch
Talbot Leland MacCarthy
Lorraine Magee
Deborah Manne
D. Michele Maritz

Silver Level Continued

Mary W. Martin
Meghan Mathison
Amy Mayfield
Melinda McAliney
Mrs. Charles N. McAlpin
Linda Lewis McCoy
Raina McNutt
Betsy Meyland-Smith
Nancy Middleton
Roberta Mikus
Mrs. William J. Moriconi
Eleanor Mullin
Ellen Nicholson
Ann Kinney O'Brien
Linda O'Hara
Sheila O'Toole
Mina Overton
Kylie Piatt
Kristen Polchinski
Emily Bannister Rapp,
Derek & Emily Rapp Family Fund
of the Greater Saint Louis
Community Foundation
Rosemary Robbins
Nancy Rodgers
Theresa Ruzicka
Christy Schlafly
Laura Shaughnessy
Eleanor Simpson
Barbara Smith
Julia Steurer
Marion Stevens
Anne Stolz
Molly Strassner
Barbara Summers
William R. and Carol M. Taylor
Kate Totterdale
Mary Ann Van Lokeren
Davin Wenner
Anne Wetzel
Ann White
Rita Witler
Alice Wolfe
Mary Wright
Rebecca Zaccarello
Zipf-Air Inc.
Georgia Zutter
Margaret Zwart



Bronze Level \$50—\$99

Vivienne Beckett
 Mary Behnke
 Danielle Bialecki
 Ann Brubaker
 Susan Bruno
 Meredith Byers
 Jeanne Canada
 Jessica Curran
 Gretchen Davis
 Karen Davis
 Gretchen G. Davis
 Tabitha Davisson
 Martha Desloge
 Anne Edmunds
 Kara Evans
 Kathryn R. Farrell
 Dotti Fischer
 Ann Frawley
 Christy Forman Fryer
 Albert Gallardo
 Barbara Gervais
 Elizabeth Gibbons
 Constance Green
 Joan Hagedorn-Ball
 Lynn Friedman Hamilton
 Valerie Harris
 Dr. Cara Hoffmeyer
 Kathy Jakuc
 Ellen E. Jones
 Ann Key
 Paula Korman
 Kelly LaMartina
 Anita Buie Lamont
 Kim Livingston
 Mrs. Richard E. Lord
 Joyce G. Marsh
 Mary Wellington Martin
 Marjorie McFarland
 Christina Muther
 Mrs. James D. Newell, Sr.
 Sally Petty
 Jean B. Quenon
 Jane Saghir
 Marilyn Schnuck
 Eve B. Spencer
 Marion Stevens
 Debbie Thompson
 Elaine B. Tracy
 Barbara Webster
 Linda Hermann Wimpfheimer

**Supporter \$1—\$49**

Betty Amelotti
 Lauren Ashman
 Ann F. Babington
 Heather Backes
 Nancy Baker
 Barbara Barrett
 Lori Bell
 Jennifer L. Bergsieker
 Nancy Birge
 Helaine Boland
 Lucyann Boston
 Sonia Breit
 Kimen Brinkley
 Kelly Britt
 Ashley Bryan
 Patti Bubash
 Danielle Cichowic
 Alice Conway
 Catherine Cort
 Debbie Davis
 Joyce Day
 Judy Dude
 Dot Fleshman
 Michelle A. Forgach
 Kristin Frisch
 Gretchen Gaynor
 Mary Gould
 Mr. and Mrs. James Graham
 Holly Hoffman
 Janet Hoyne
 Ellen Jones
 Elizabeth A. M. Jumet
 Laura B. Kasak
 Julie Kearbey
 Kelly Britt
 Katie King
 Jean Knapstein
 Christy Koenemann
 Connie Lai
 Allison Lavigne
 Margie Lazarus
 Julietta Licavoli
 Kellie Mandry
 MaryAnn Mathews
 Jennifer Moore McCarthy
 Sally McCarthy
 Erin McKenna
 Molly Mehaffey
 Janet Mika
 Marcia Miller
 Dana Moloney
 Navonna Morrison
 Tricia O'Brien
 Kimberly Phillips
 Alicia Power
 Lori Ramsey

Supporter Continued

Megan Richter
 Megan Riley
 Ashley Ringer
 Marla Ruff
 Candace Marie Ruocco
 Tracy Rychlewski
 Jennifer Sachs
 Jessica Sargent
 Susan Schenberg
 Krissy Schwedtmann
 Mary Semple
 Peggy Southworth
 Sheryl Taylor
 Maud G. Thomas
 Liz Young Vann
 Krishna Walker
 Michelle Willer
 Ann Wimsatt

**2013-2014 Angel Dues**

Jennifer Avery
 Lisa Barry
 Marilyn E. Baumann
 Ann Ahrens Beck
 Vivienne Beckett
 Cherie Bock
 Patty Boehm
 Tara Bracher
 Erin L. Brooks
 Nataki Brown Jones
 Candy Caciolo
 Jeannie G. Canada
 Debbie Cason
 Christine Chadwick
 Heather Haas Chaney
 Mary Ciapciak
 Gladys Cramer
 Carrie Crompton
 Kari Culver
 Gretchen Gregory Davis
 Tabitha Davisson
 Mary Dedeaux-Swinton
 Mimi Denes
 Maranda Denk
 Martha Desloge
 Claire Devoto
 Catherine Dickson
 Sandra Dillard

Angel Dues Continued

Patricia Ann Dolson
 Judy Dude
 Katy Farrell
 Edie Fay
 Sue Felling
 Barbara Ferman
 Sue Flanagan
 Pat Fogle
 Gretta Forrester
 Margie Franz
 Kathy Freeman
 Christy Forman Fryer
 Julie Gaebe
 Barbara Gervais
 Abby Goldstein
 Karen K. Goodman
 Leslie Goodrich
 Pam Gunn
 Kathy Hazan
 Karen Heath
 Julie Higginbotham
 Lynn Hill
 Yvona Hopkins
 Eileen Hulsey
 Allison Hymel
 Jaime Ingle
 Laura Jacoby
 Vicki Jacoby
 Kathy Jakuc
 Katherine Jozefiak
 Maggie Kaspura
 Marge Kelley
 Rebecca Klos
 Jennifer Knuckles
 Sallie Kratz
 Andrea Kraus
 Connie Kraus
 Pam Krekeler
 Abigail Lambert
 Marti Lanese
 Chris Lineback
 Elizabeth "Lisa" Lineback
 Denise C. Lizenby
 Nancy Logan
 Connie Lohr
 Lorraine Magee
 Laura Maher
 Elizabeth Maritz
 Trish Martin
 Anne McAlpin
 Jennifer McDonnell
 Karen McFarland
 Raina McNutt
 June G. Michael
 Nancy Middleton
 Roberta Mikus
 Bette Mueller

Angel Dues Continued

Mimi Murphy
 Nina Needleman-Swartz
 Ann T. K. O'Brien
 Brandi O'Kelley
 Mina Overton
 Lynn Rassieur
 Jessica Restivo
 Nancy Rodgers
 Kathy Ryan
 Patricia Saleeby
 Gigi Sanders
 Laura Shaughnessy
 Wendy Shireman
 Patti Short
 Sydne Siefert
 Connie Smith
 Kathryn Snodgrass
 Eve Spencer
 Marion Stevens
 Joanne Strathearn
 Kate Totterdale
 Mary Ann Van Lokeren
 Liz Vann
 Keri Welhart
 Davin Wenner
 Ann White
 Debbie Wilhelm
 Rita Witler
 Katherine Ziegler
 Kristy Zueck
 Margaret Zwart

**2013-2014 Donors and****Advertisers**

Christy Adams
 Alexian Brothers Sherbrooke Village
 Anonymous
 Aquarius Wellnes
 Center for Healing Arts

Every effort has been made to ensure the accuracy of these lists. If you find an error, please accept our sincerest apologies and notify us at (314) 822-2344 so we can correct our records. Thank you.

Donors and Advertisers Continued

Atlas Restaurant
 Lisa Barry
 Mario Batali
 Janie Blanton
 Susan Block
 Blown Away Blow Dry Bar
 Breeze Blow Dry Bar
 Ashley Bryan
 Canvas On Demand
 Chandler Hill Vineyards
 Susan "Sam" Cocking
 Codi the Boutique
 Colleen's Cookie Caife
 Erin Condren
 Copying Concepts
 Cat Cora
 Creve Coeur Camera
 Jo Anne "Midge" Gannon Crider
 Kathy and Frank Curotto
 Karen Davis
 Paula Deen
 Delmar Gardens West
 Designs by Elise
 Dewey's Pizza
 Patty Dolson
 Drue Webster Committee
 Drury Hotels Company, LLC
 Julie Dubray
 Emerson Air Comfort Products
 Emerson Tool Company
 European Wax Center
 Faster Fitness
 Faye and Marshall Fay
 Guy Fieri
 Bobby Flay
 Dot Fleshman
 Pat Fogle
 Forest Park Forever
 Josh Galliano
 Garland Wine
 Ina Garten
 Frances Gay
 Gretchen Gaynor
 Debbie Genung
 Liz Gibbons
 Ginger Bay
 Glazer's Inc.
 London Gleghorn
 Glow Nutrition
 GolfTec Clayton
 Goodnight St. Louis
 Leslie Goodrich
 Gymboree Play & Music of St. Louis
 Tammy Kahre Hardesty
 Valerie Harris
 Lisa Martin Hawver
 June Herman

Donors and Advertisers Continued

Hollywood Casino St. Louis
 Hyatt Regency St. Louis at The Arch
 It's Easy as Pie LLC
 Ivy Hill Boutique
 J. Gilbert's
 Jackson Pianos, Inc.
 James Avery Jewelry
 Jewish Community Center
 Mrs. Ellen E. Jones
 Kakao Chocolate
 Kaldis Coffee
 Kansas City Royals
 Katherine Jessica Collections
 Diane Kerckhoff
 Kitchen Conservatory
 Michael Kramer
 Emeril Lagasse
 Allison Lavigne
 Chris Lineback
 Little Fishes Swim School
 Nancy Logan
 Constance Lohr
 Stephanie Marhefka
 Massage Envy of Clayton
 Meghan Mathison
 Matthew Robert Color +
 Design Salon
 Amy Mayfield
 Jennifer McCarthy
 Karen McFarland
 Patricia McKinnis
 Mission Taco Joint
 Missouri Botanical Garden
 Bette Mueller
 Karen Musick
 Naked Vine
 Kevin Nashan
 Nina Needleman-Swartz
 Organizing Magic, LLC
 Elly Painter
 Sally Petty
 Pomme Café & Wine Bar
 Pomme Restaurant
 Pretzel Boys
 PRP Wine International
 Arlene Ramsey
 Lori Ramsey
 Allie Chang Ray
 Eric Ripert
 Royal Banks of Missouri
 Jenna Yungck Ryrie
 School of Rock
 Seasonal Concepts
 Sisters Garden Gate Recipes
 SLM Media Group
 Art Smith
 Jessica Stafos

Donors and Advertisers Continued

Joanne Strathearn
 Maureen Strasheim
 Strauss Peyton
 Barbara Summers
 Sunset World
 Surrey Place
 Team Central
 Ted Drewes
 Tesson Heights Senior Living
 Community
 The Art of Entertaining
 The Designing Block
 The Drue Webster Committee
 The Magic House
 The Mary Culver Home
 The Paper Garden
 The Sarah Community
 The Schlafly Tap Room
 Thompson Coburn LLP
 Time for Dinner
 twigs & MOSS
 Urban Chestnut Brewing Company
 Maryann Vitale
 Katherine Wallace-Hodel
 Wellbridge Athletic Club
 Regina Wells
 Heather Winsby
 Wolken Dental
 Yucando LLC

**2013-2014 Tributes****In Honor of Susan "Sam"****Cocking's Birthday**

Pat Fogle
 Diane Kerckhoff
 Karen McFarland
 Joanne Strathearn

**In Honor of Jane Towater's
Birthday**

Frances Gay

**In Honor of Claire Devoto's
Birthday**

Susan "Sam" Cocking
 Pat Fogle
 Diane Kerckhoff
 Karen McFarland
 Joanne Strathearn

Tributes Continued**In Honor of Pat Fogle's Birthday**

Diane Kerckhoff
 Karen McFarland
 Joanne Strathearn

**In Honor of Frances Gay's
Birthday**

Pat Fogle
 Diane Kerckhoff
 Karen McFarland
 Joanne Strathearn

**In Honor of Diane Kerckhoff's
Birthday**

Pat Fogle
 Karen McFarland
 Joanne Strathearn

**In Honor of Karen McFarland's
Birthday**

Pat Fogle
 Diane Kerckhoff
 Joanne Strathearn

**In Honor of Jane McElwee's
Birthday**

Susan "Sam" Cocking
 Pat Fogle
 Diane Kerckhoff
 Karen McFarland
 Joanne Strathearn

**In Honor of Joanne Strathearn's
Birthday**

Susan "Sam" Cocking
 Pat Fogle
 Diane Kerckhoff
 Karen McFarland
 Joanne Strathearn

In Honor of Sue Felling's Birthday

Faye and Marshall Fay

**In Honor of Becky Zaccarello's
Birthday**

Susan "Sam" Cocking
 Pat Fogle
 Diane Kerckhoff
 Karen McFarland
 Joanne Strathearn

**In Honor of Sheila O'Toole's
Birthday**

Joanne Strathearn

In Honor of Sally Lefler's Birthday

Joanne Strathearn

Tributes Continued

In Honor of Rita Witler's Birthday
Joanne Strathearn

In Honor of Patty Dolson's Birthday
Susan "Sam" Cocking

In Honor of Ann Eisel's Birthday
Joanne Strathearn

In Honor of Eileen Hulsey's Birthday
Heather Winsby

In Honor of Claire Devoto
Joanne Strathearn

In Honor of Rita Witler for a Fond Farewell
Joanne Strathearn

In Honor of Nance St. James
Connie Lohr

In Honor of the 100th Anniversary Steering Committee
Joanne Strathearn

In Honor of Bette Mueller
Anonymous
Liz Gibbons

In Honor of Maureen Strasheim
Joanne Strathearn

In Honor of the Drue Lane Webster Committee
Joanne Strathearn

In Honor of the AJLI Conference Committee
Joanne Strathearn

In Honor of the Cookbook Wrapping Group for AJLI Hospitality
Joanne Strathearn

Tributes Continued

In Honor of the May 3, 2014 Wedding of Kirk A. Fickert and Susan C. Fox
Arlene and Lori Ramsey

In Honor of the JLSL Staff
Joanne Strathearn

In Honor of Beth Goad Being Named Executive Director of Episcopal City Missions
Elly Painter

In Honor of Joan Hagedorn-Ball
Joanne Strathearn

2013-2014 Memorials

In Memory of Betty Jane Goldstein
Joanne Strathearn

In Memory of Moreen Kelley McBride
Karen McFarland
The Drue Webster Committee

In Memory of Michael Flachmann
Karen McFarland
Elly Painter
The Drue Webster Committee

In Memory of the Father of Ann Wimsatt
Elly Painter

In Memory of Marian Clifford
Michael Kramer

In Memory of the Mother of Sally Ledbetter
Karen McFarland

In Memory of Doris Dolson
Susan "Sam" Cocking
Sally Petty
Allie Chang Ray

In Memory of Bob Nast
Susan "Sam" Cocking
Karen McFarland
Joanne Strathearn

In Memory of Judge Jim Pudlowski
Jo Anne "Midge" Gannon Crider
Pat McKinnis
Bette Mueller

In Memory of Steve Schwendemann
Jo Anne "Midge" Gannon Crider

In Memory of Clifford Jordan
Elly Painter

In Memory of Edward Elzemeyer
Elly Painter

In Memory of Inga Jean Ball
Elly Painter

In Memory of Marshall Manne
Pat McKinnis



It Was a Wonderful Year!



Statement of Financial Position May 31, 2014 and 2013**ASSETS**

| | 2014 | 2013 |
|-----------------------------------|---------------------|---------------------|
| Cash and cash equivalents | \$ 195,559 | \$ 196,246 |
| Investments | \$ 696,851 | \$ 634,162 |
| Accounts receivable | \$ 54,527 | \$ 46,423 |
| Inventories | \$ 27,704 | \$ 31,470 |
| Prepaid expenses and other assets | \$ 10,527 | \$ 3,128 |
| Property and equipment, net | \$ 770,129 | \$ 792,405 |
| TOTAL ASSETS | \$ 1,755,297 | \$ 1,703,834 |

LIABILITIES AND NET ASSETS**CURRENT LIABILITIES**

| | | |
|----------------------------------|-------------------|-------------------|
| Accounts payable | \$ 9,942 | \$ 5,233 |
| Accrued expenses | \$ 20,683 | \$ 19,568 |
| Deferred dues and fees | \$ 130,703 | \$ 120,878 |
| Total Current Liabilities | \$ 161,328 | \$ 145,679 |

NET ASSETS

| | | |
|--|---------------------|---------------------|
| Unrestricted | \$ 1,551,841 | \$ 1,503,450 |
| Temporarily Restricted: | | |
| Capital Reserve | \$ 12,688 | \$ 14,653 |
| Drue Webster | \$ 18,859 | \$ 20,557 |
| Ruth Todd | \$ 10,581 | \$ 19,495 |
| Total Temporarily Restricted Net Assets | \$ 42,128 | \$ 54,705 |
| Total Net Assets | \$ 1,593,969 | \$ 1,558,155 |

TOTAL LIABILITIES AND NET ASSETS

| | |
|---------------------|---------------------|
| \$ 1,755,297 | \$ 1,703,834 |
|---------------------|---------------------|

Statements of Activities

| | 2014 | 2013 |
|--|-------------------|-------------------|
| <u>PUBLIC SUPPORT AND REVENUE</u> | | |
| Contributions and grants | \$ 26,066 | \$ 38,956 |
| Program services | \$ 99,613 | \$ 115,822 |
| Product sales, net | \$ 32,029 | \$ 28,218 |
| Membership dues and fees | \$ 133,582 | \$ 126,073 |
| Special events, net | \$ 79,951 | \$ 40,247 |
| Investment income (loss) | \$ 55,781 | \$ 70,014 |
| Other income | \$ 1,176 | \$ 21,701 |
| TOTAL SUPPORT AND REVENUE | \$ 428,198 | \$ 441,031 |

EXPENSES

| | | |
|--|-------------------|-------------------|
| Program services: | | |
| Community service programs | \$ 213,058 | \$ 206,491 |
| Training and educational programs | \$ 87,708 | \$ 76,220 |
| Total program services expenses | \$ 300,766 | \$ 282,711 |

Support services:

| | | |
|---|------------------|-------------------|
| Management and general | \$ 14,227 | \$ 55,303 |
| Fundraising | \$ 54,525 | \$ 40,631 |
| Unallocated payments to national - dues | \$ 22,866 | \$ 22,347 |
| Total support services expenses | \$ 91,618 | \$ 118,281 |

TOTAL EXPENSES

| | |
|-------------------|-------------------|
| \$ 392,384 | \$ 400,992 |
|-------------------|-------------------|

CHANGE IN NET ASSETS

| | |
|------------------|------------------|
| \$ 35,814 | \$ 40,039 |
|------------------|------------------|

NET ASSETS

| | | |
|--------------------|---------------------|---------------------|
| Beginning of year | \$ 1,558,155 | \$ 1,518,116 |
| End of year | \$ 1,593,969 | \$ 1,558,155 |

2013-2014 Board of Governance

PRESIDENT

Maureen Strasheim

PRESIDENT-ELECT

Allie Chang Ray

TREASURER

Suzanna Ney

SECRETARY

Marion Stevens

GOVERNORS

Barbara Barrett Ann Beck
Amy Mayfield Elly Painter

STAFF

Sally Petty, Director of Operations
Ashley Bryan, Member Liaison/Receptionist
Janet Mika, Financial Manager

MISSION STATEMENT

*The Junior League of St. Louis is an organization of women committed to promoting voluntarism, developing the potential of women, and improving the community through the effective action and leadership of trained volunteers.
Its purpose is exclusively educational and charitable.*

FOCUS

Strengthening Our Families
The Junior League of St. Louis (JLSL) provides volunteers, program funding and technical assistance to the community within its focus and areas of concentration:
1. Protecting and Empowering Our Children
2. Women's Health and Well Being

REACHING OUT STATEMENT

JLSL reaches out to women of all races, religions, and national origins who demonstrate an interest in and commitment to voluntarism.

VISION STATEMENT

The Junior League: Women around the world as catalysts for lasting community change.

Junior League of St. Louis
106 North Kirkwood Road
Saint Louis, MO 63122
Telephone: (314) 822-2344
Fax: (314) 821-3188
www.jlsl.org